

PRODUCT DESCRIPTION

SPECTEC's Intrinsically Safe digital output RF sensors are designed for installation in hazardous locations. They are offered in a wide variety of configurations as outlined on page 2. These sensors are actuated by gear teeth and other ferrous targets but do not cause magnetic drag. Versions with ATEX & IECEx certification are available under part numbers IS100A & IS101A. Custom sensors can also be created to meet specific needs.

INSTALLATION

CAUTION: This sensor MUST be installed with an FM approved barrier and following the details specified in the Installation Instruction Document #85047.

SPECIFICATIONS

- Supply Voltage:** 8 to 30 Vdc @ ≤15 mA
- Output Voltage:** See page 2
(25 mA maximum current sinking)
- Frequency Range:** ~0.5 Hz to 5000 Hz
- Rise/Fall Time:** .04 / .18 μs Nominal
- Air Gap:** ≤ .20" (5mm)
Depending on target mass
- Connection:** Connector or lead wires. See page 2
- Construction:** 300 Series Stainless Steel
Solid Epoxy Encapsulation

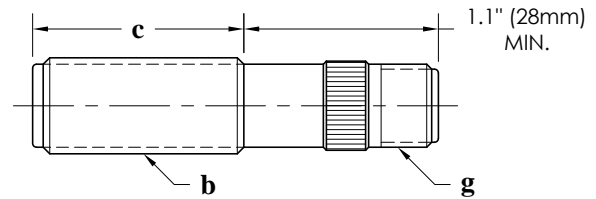
CERTIFICATIONS for IS100 & IS101

- USA:** Intrinsically Safe
Class I, II, III, Division 1
GROUP ABCDEFG T6...T5
Class I, Zone 0, AEx ia IIC T6...T5
- Canada:** Intrinsically Safe
Class I, Division 1
GROUP ABCD T6...T5
Class I, Zone 0, Ex ia IIC T6...T5
T5 @ -40°C ≤ T_{amb} ≤ +85°C
T6 @ -40°C ≤ T_{amb} ≤ +65°C

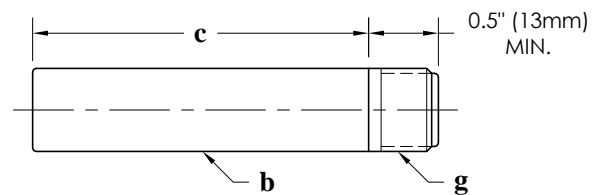
CERTIFICATIONS for IS100A & IS101A

- ATEX:** II 1 G Ex ia IIC T6...T4 Ga
FM08ATEX0066X
- IECEx:** Ex ia IIC T6...T4 Ga
IECEx FMG 16.0003X
T4 @ -40°C ≤ T_{amb} ≤ +100°C
T5 @ -40°C ≤ T_{amb} ≤ +85°C
T6 @ -40°C ≤ T_{amb} ≤ +65°C
- CE:** Compliance with
EN55011, EN50082-2

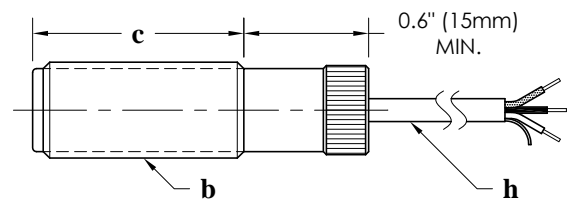
- IS100** K shell type, knurled (shown below)
A shell type, all-thread (knurl removed)
H shell type, hex (knurl replaced by hex)



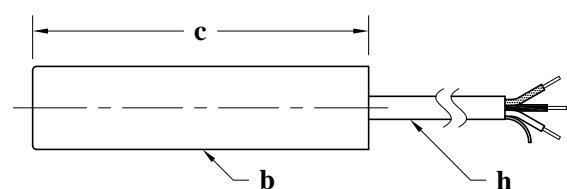
- IS100** S shell type, smooth (custom units available)



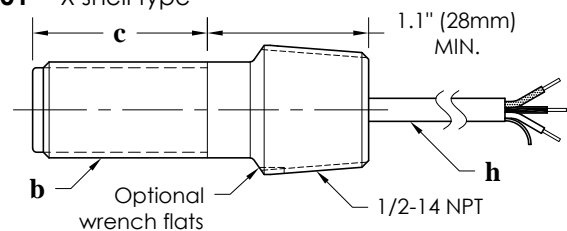
- IS101** K shell type, knurled (shown below)
A shell type, all-thread (knurl removed)
H shell type, hex (knurl replaced by hex)



- IS101** S shell type, smooth (custom units available)



- IS101** X shell type



- IS101** Y shell type

