

#### PRODUCT DESCRIPTION

SPECTEC's connector/cable assemblies with cable clamp/boot assembly are designed to provide an interface between sensors and signal conditioners or instrumentation. These will mate with our standard 'MS' & 'MO' (2 and 3 pin) sensors (MS310210SL-xP).

#### CONNECTOR ASY:

Equivalent to Amphenol versions listed below:

	Straight versions	Right angle versions
2 PIN:	MS3106A10SL-4S	MS3108R10SL-4S
3 PIN:	MS3106A10SL-3S	MS3108R10SL-3S

NOTE: The basic standard connector is rated to 125°C.

#### ORDER INFORMATION

3000 - 0 0  Connector Assembly

Number of Pins & Connection Style	2	- 2 Pin 'MS'	Straight Connector
	3	- 3 Pin 'MS3'	
	6	- 2 Pin 'MS'	Right Angle Connector
	7	- 3 Pin 'MS3'	

#### CONNECTOR / SHIELDED CABLE ASY:

Standard:	105°C PVC, 22-24 AWG
High Temp 5HT:	200°C TFE, MIL SPEC, 22-24 AWG P/N Example: 3000-xxxTFE
High Temp 8HT:	400°C FIBERGLASS, 22 AWG P/N Example: 3000-xxx-8HT
BNC versions:	80°C PVC, COAX, RG58 P/N Example: 3000-3xx

#### ORDER INFORMATION

3000 -    Connector / Cable Assembly

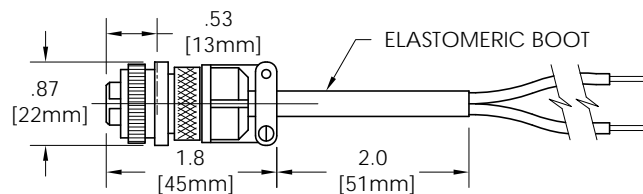
Number of Pins & Conductors	2	- 2 Pin 'MS'	Straight Connector
	3	- 3 Pin 'MS3'	
	4	- 3 Pin 'MS3B'	Right Angle Connector
	6	- 2 Pin 'MS'	
7	- 3 Pin 'MS3'		
8	- 3 Pin 'MS3B'		

Shielded Cable Length ft. (m)	A	- 1' (0.3m)
	1	- 3' (1m)
	2	- 6' (2m)
	3	- 10' (3m)
	4	- 20' (6m)
	5	- 33' (10m)
	6	- 50' (15m)
	7	- 75' (23m)
8	- 100' (30m)	

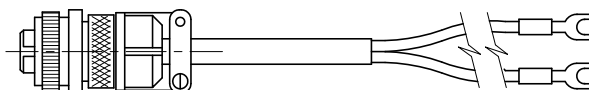
Cable Termination	1	- Stripped leads (tinned)
	2	- Spade lugs
	3	- BNC Connector (2 Pin only)
	4	- Same MS3116 as above

#### Straight Connector w/ Stripped Leads

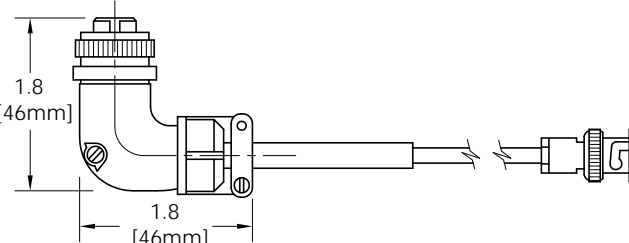
Dimension in Inches (mm)



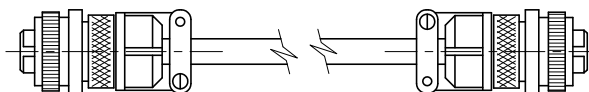
#### Straight Connector w/ Spade Lugs



#### Right Angle Connector w/ BNC Connector

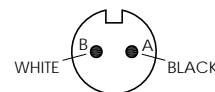


#### Straight Connector w/ Straight Connector

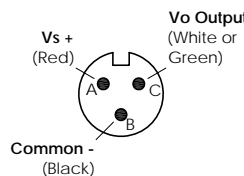


#### COLOR CODE (PIN TO WIRE)

2 PIN 'MS' for 2-wire sensors



3 PIN 'MS3' style for 3-wire digital sensors



3 PIN 'MS3B' style for 3-wire digital sensors

