

PRODUCT DESCRIPTION

SPECTEC's 3/4" magnetic pickups are part of a family of rugged, high performance "passive" type speed sensors ranging in size from 3/16" to 3/4" Dia. VRS feature high output voltage and great configuration diversity to meet a wide range of applications. An integrated temperature sensor is available as an option. Sanitary, sealed blind shell construction is also available.

For CL 1, Div I & II hazardous location, Intrinsically Safe, and Non-Incendive versions; please refer to IS40/41 and N40/41.

SPECIFICATIONS

Coil Resistance	Type 1:	80Ω	25mH	40Vpp
Inductance	Type 2:	150Ω	85mH	50Vpp
Output Voltage:	Type 3:	230Ω	120mH	70Vpp
	Type 4:	1200Ω	700mH	180Vpp
	Type 5:	2000Ω	1100mH	230Vpp
	Type 6:	3000Ω	15000mH	290Vpp
	Type 7:	5000Ω	25000mH	330Vpp

(1000IPS, 20-pitch gear at .005 gap. 100K Ohm load. Inductance and output voltage notations are maximum values.)

Magnetization: Standard: 1000 GAUSS, TYP.
 Low Mag: 250 Gauss, TYP. See Pg. 2 Note

Temperature Range:
 2T: -100° to 250°F (-73° to 120°C)
 3T: -150° to 330°F (-101° to 165°C)
 5HT: -450° to 450°F (-268° to 232°C)
 RTD: -330° to 450°F (-200° to 232°C)
 NCT: -112° to 300°F (-80° to 150°C)

Pole Type: Flush (FP), Extended (EP), & Chisel Points (CP) are available. (Chisel must be Oriented parallel with gear tooth.)

Gear Pitch	Pole Type
≤36 DP (MODULE 0.7)	EP62, CP10
≤26 DP (MODULE 0.98)	EP93
≤24 DP (MODULE 1.06)	FPS130, FP130, EPS106, EP106, EP125, CP45
≤12 DP (MODULE 2.11)	EP187
≤5 DP (MODULE 5.1)	EP250

Connectors: See Page 2 for Configurations
 All have Gold Plated Contacts

Lead Wire: See Page 2 for Wire & Cable Options
 2T: PVC, 20-24 AWG
 3T & 5HT: TFE, 20 AWG
 RTD & NTC: TFE, 20 AWG

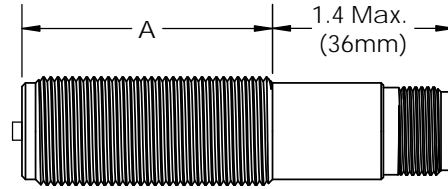
Construction: 300 Series Stainless Steel
 Solid Epoxy Encapsulation

CE Compliance: EN50081-1, EN50082-1

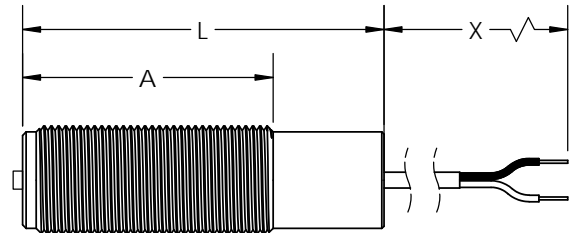
OPTIONS

For different length, material of construction, configuration, special pole-piece types, thread size, hermetically, sealed, termination, please contact factory.

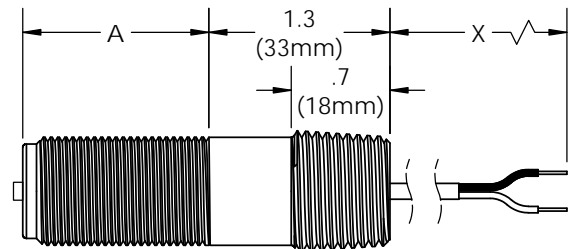
0030 3/4-16 UNF
0030B 3/4-20 UNEF
0030M M18x1.5
0030M1 M18x1.0



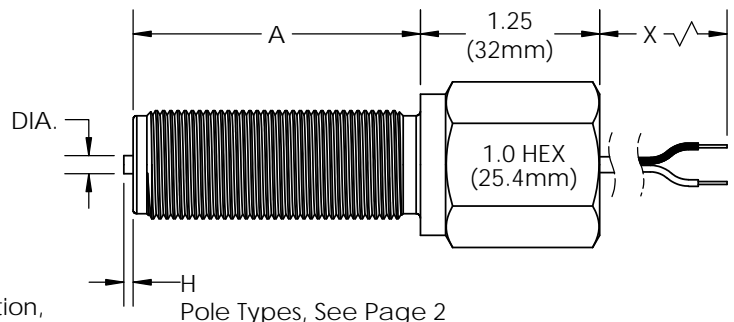
0029 3/4-16 UNF
0029B 3/4-20 UNEF
0029M M18x1.5
0029M1 M18x1.0



0035 3/4-16 UNF w/ 1/2-14 NPT Male
0035B 3/4-20 UNEF w/ 1/2-14 NPT Male



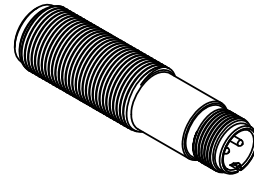
0038 3/4-16 UNF w/ 1/2-14 NPT Female
0038B 3/4-20 UNEF w/ 1/2-14 NPT Female



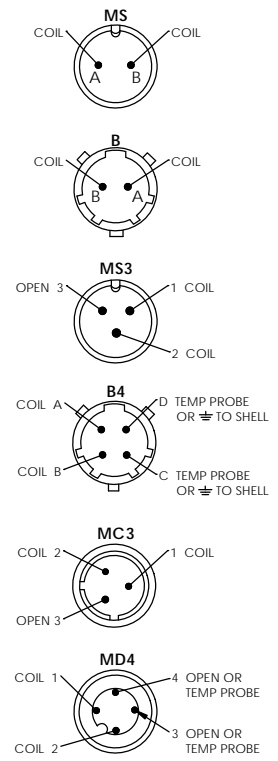
Pole Types, See Page 2

ORDER INFORMATION

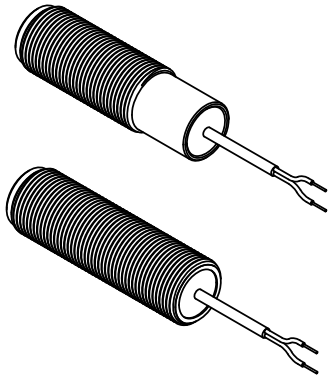
STYLE:	OPTIONS:	THREADS/DIA.:	
0030	- <input type="checkbox"/> <input type="checkbox"/> <input type="checkbox"/> <input type="checkbox"/> <input type="checkbox"/>	3/4-16 UNF	
0030B	- <input type="checkbox"/> <input type="checkbox"/> <input type="checkbox"/> <input type="checkbox"/> <input type="checkbox"/>	3/4-20 UNEF	
0030M	- <input type="checkbox"/> <input type="checkbox"/> <input type="checkbox"/> <input type="checkbox"/> <input type="checkbox"/>	M18 x 1.5	
0030M1	- <input type="checkbox"/> <input type="checkbox"/> <input type="checkbox"/> <input type="checkbox"/> <input type="checkbox"/>	M18 x 1.0	
Thread Length(A):		1 - 0.9" (25mm)	4 - 2.5" (64mm)
		2 - 1.5" (38mm)	5 - 3.5" (89mm)
		3 - 2.0" (51mm)	6 - 5.0" (127mm)
Pole Type (DIA., H):		1 - FP160	Flush Pole, Ø.160
		2 - EP106	Extended Pole, Ø.106" x .02" H
		3 - EP187	Extended Pole, Ø.187" x .02" H
		5 - FPS160	Flush Pole, Ø.160 in Sealed S.S. Face
		C - EP250	Extended Pole, Ø.250" x .02" H
Connector:		1 - MS:	2 Pin MS3102-10SL-4P (See Bulletin 3000)
		2 - B:	2 Pin MS3113-H8A2P BAYONET (See Bulletin 3001)
		3 - MS3:	3 Pin MS3102-10SL-3P (See Bulletin 3000)
		4 - B4:	4 Pin MS3113-H8A4P BAYONET (See Bulletin 3001)
		5 - MC3:	3 Pin MICRO-C (See Bulletin 3004)
		6 - MD4:	4 Pin MICRO DIN (See Bulletin 3005)
Temperature Range & Probe:		2 - 2T:	-100° to +250°F (-73° to +120°C)
		3 - 3T:	-150° to +330°F (-101° to +165°C)
		5 - 5HT:	-450° to +450°F (-268° to +232°C)
		A - RTD:	-330° to 450°F (-200° to 232°C) - RTD100 Ohm ±1%, -100°C to 232°C
		C - NTC:	-112° to 300°F (-80° to 150°C) - NTC10 kOhm ±1°C, -40°C to 100°C
Coil Resistance:		1 - 80 Ohms	5 - 2000 Ohms
		2 - 150 Ohms	6 - 3000 Ohms
		3 - 230 Ohms	7 - 5000 Ohms
		4 - 1200 Ohms	



Connector Pinouts



STYLE:	OPTIONS:	THREADS/DIA.:	
0029	- <input type="checkbox"/> <input type="checkbox"/> <input type="checkbox"/> <input type="checkbox"/> <input type="checkbox"/>	3/4-16 UNF	
0029B	- <input type="checkbox"/> <input type="checkbox"/> <input type="checkbox"/> <input type="checkbox"/> <input type="checkbox"/>	3/4-20 UNEF	
0029M	- <input type="checkbox"/> <input type="checkbox"/> <input type="checkbox"/> <input type="checkbox"/> <input type="checkbox"/>	M18 x 1.5	
0029M1	- <input type="checkbox"/> <input type="checkbox"/> <input type="checkbox"/> <input type="checkbox"/> <input type="checkbox"/>	M18 x 1.0	
Thread (A) & Housing (L) Length:		A	L
		1 - 0.9" (23mm)	1.75" (44mm)
		2 - 2.0" (51mm)	Fully Threaded
		3 - 2.0" (51mm)	2.5" (64mm)
		4 - 2.5" (64mm)	3.0" (76mm)
		5 - 3.5" (89mm)	4.0" (102mm)
		6 - 4.0" (102mm)	Fully Threaded
		7 - 6.0" (152mm)	Fully Threaded
		8 - 8.0" (203mm)	Fully Threaded



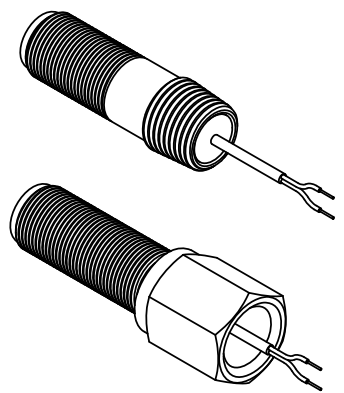
SAME AS ABOVE

Lead Wire(X):		1 - 1' (.3m)	Single Leads	
		2 - 2' (.6m)	Single Leads	
		7 - 3' (1m)	Shielded Cable	Note: Cable Shielding is not connected to sensor, and is intended to be connected the instrument ground.
		9 - 10' (3m)	Shielded Cable	

SAME AS ABOVE

STYLE:	OPTIONS:	THREADS/DIA.:	
0035	- <input type="checkbox"/> <input type="checkbox"/> <input type="checkbox"/> <input type="checkbox"/> <input type="checkbox"/>	3/4-16 UNF with 1/2-14 NPT Male	
0035B	- <input type="checkbox"/> <input type="checkbox"/> <input type="checkbox"/> <input type="checkbox"/> <input type="checkbox"/>	3/4-20 UNEF with 1/2-14 NPT Male	
0038	- <input type="checkbox"/> <input type="checkbox"/> <input type="checkbox"/> <input type="checkbox"/> <input type="checkbox"/>	3/4-16 UNF with 1/2-14 NPT Female	
0038B	- <input type="checkbox"/> <input type="checkbox"/> <input type="checkbox"/> <input type="checkbox"/> <input type="checkbox"/>	3/4-20 UNEF with 1/2-14 NPT Female	
Thread Length(A):		0035(B)	0038(B)
		0 - 0.9" (23mm)	---
		1 - 1.3" (33mm)	1.5" (38mm)
		2 - ---	2.0" (51mm)
		3 - ---	2.8" (71mm)
		4 - ---	4.0" (102mm)
		6 - ---	6.0" (152mm)

SAME AS ABOVE



Notes: 1. The magnetization level for special or low mag. sensors, is designated as a suffix to the P/N, i.e.: 0029 -11111-300G, designating a gauss level of 300(±50). (Standard mag. level will not have a suffix.)
 2. The optional 5/8" hex is designated by adding a "H" immediately after the four digit base number. i.e.: 0030HB, designating a hex added to the 3/4-20 connector type 0030.