

SPECTEC

THUNDERBIRD INTERNATIONAL CORPORATION
 P.O. BOX 360, EMIGRANT, MT 59027, USA
 (406) 333-4967 FAX: (406) 333-4259
 www.spectecensors.com



0024 • 0025

Magnetic Speed Sensor Ultra High Temperature

1/2, 5/8, 11/16, 3/4, M18

PRODUCT DESCRIPTION

SPECTEC's high temperature magnetic pick-ups are offered in size from 5/8 to 3/4" Dia. and suited for harsh environments. The 0025 is available with an integral precision RTD100 or NTC10 temperature sensor positioned at the front.

SPECIFICATIONS

DC-Coil Resistance/Inductance:

Type 1: 120 Ω / 60 mH
 Type 2: 150 Ω / 100 mH

Magnetization: Standard: 1000 GAUSS, TYP.
 Low Mag: 300 GAUSS, TYP.

Temperature Range: 8HT: -450° to 850° F (-270° to 454° C)
 (RTD: -200° to 454° C)

For -450° to 450° F standard high temp service, please refer to 5HT models under 0015 • 0017 • 0019, 0026 • 0027, and 0029 • 0030 • 0035 • 0036

Pole Piece: Flush pole is standard. Extended pole version are available. See table below & notes on Page 2.

Gear Pitch	Pole Piece
≤36DP (Module 0.7)	EP62
≤26DP (Module 0.98)	EP93
≤24DP (Module 1.06)	EP106 EP125 FP

Construction: 303/304 Stainless Steel, Blindshell CF (closed face) design. Solid ceramic encapsulation.

Connector: MS 2 Pin (MS3102-10SL-4P)
 Glass sealed

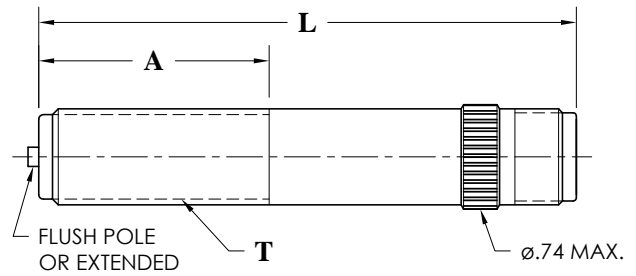
Lead Wire: Mica-glass insulated, 22AWG.

Application: For gear pitch of 24 DP or coarser. Versions are available for finer pitches up to 36 DP. (depending on pole piece selection).

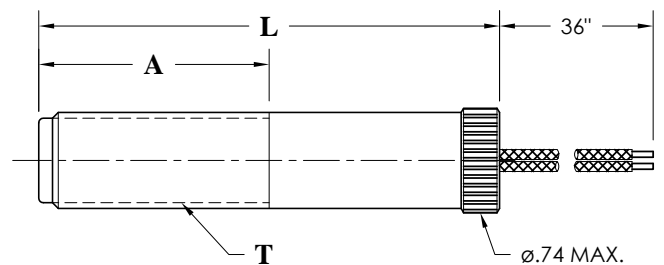
OPTIONS

For different length, material of construction, configuration, special pole type, thread size, high temperature MS connector version, precision custom magnetization, or other option please contact factory.

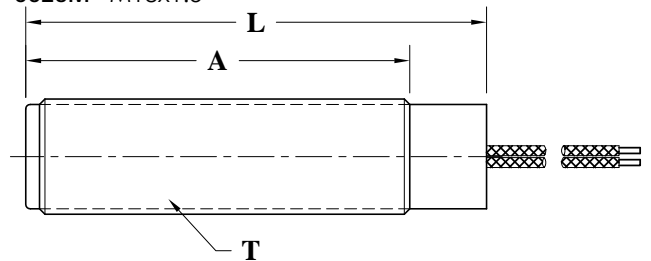
0024 5/8-18 UNF & 11/16-24 UNEF



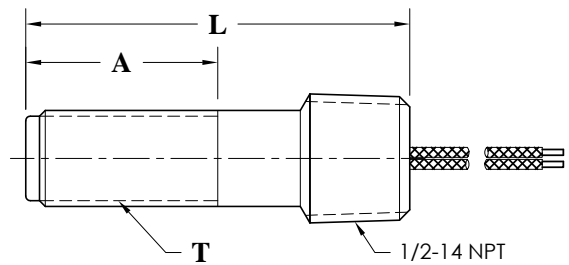
0025 5/8-18 UNF & 11/16-24 UNEF



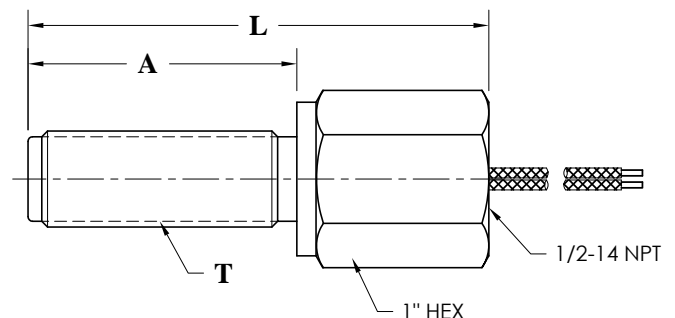
0025 3/4-20 UNEF
 0025M M18x1.5



0025X 5/8-18 UNF & 11/16-24 UNEF



0025Y 5/8-18 UNF & 3/4-20 UNEF



ULTRA HIGH TEMPERATURE MAGNETIC VRS SPEED SENSOR

0024 PRODUCT DETAILS:

P/N	T	A	L	POLE [dia. & length]	RESISTANCE [ohms]	GAUSS [nominal]
0024-20	11/16-24 UNEF	1.1" (27mm)	2.8" (71mm)	.160" (4mm) FLUSH	130	650
0024-21		1.3" (33mm)	3.5" (89mm)			1100

0025 PRODUCT DETAILS:

P/N	T	A	L	POLE * [dia. & length]	RESISTANCE [ohms]	GAUSS [nominal]
0025-00	1/2-20 UNF	1.0" (25mm)	2.8" (71mm)	.106" (2.7mm) FLUSH	80	650
0025-01	5/8-18 UNF	1.0" (25mm)	3.0" (76mm)	.160" (4mm) FLUSH	120	1100
0025-03		1.5" (38mm)	3.6" (91mm)		150	
0025-05		1.1" (27mm)	2.3" (57mm)		120	
0025-18	11/16-24 UNEF	1.1" (27mm)	2.3" (57mm)		150	700
0025-19		1.3" (33mm)	3.0" (76mm)		130	
0025-20		2.5" (63mm)	3.0" (76mm)		130	1100
0025-21		2.5" (63mm)	3.0" (76mm)		150	
0025-50	3/4-20 UNEF	2.5" (63mm)	3.0" (76mm)		150	1100
0025M-50	M18x1.5	2.0" (51mm)	3.5" (89mm)		130	
0025X-10	5/8-18 UNF	2.8" (70mm)	4.0" (101mm)			
0025Y-10		2.0" (51mm)	3.3" (83mm)		150	
0025Y-50	3/4-20 UNEF	2.0" (51mm)	3.3" (83mm)			
0025Y-55		3.5" (89mm)	4.8" (121mm)			

* FOR EXTENDED POLE VERSIONS, SEE TABLE BELOW
(Ex. 0025-xxA for EP125)

P/N Modifier	Pole Piece	Dimensions
A	EP125	ø.125 x .070
B	EP106	ø.106 x .020
C	EP93	ø.093 x .032
D	EP62	ø.062 x .032

OTHER OPTIONS:

SPECIFIED MAGNETIZATION:

0025-xx-300G FOR 300 GAUSS

INTEGRAL TEMP. SENSOR OPTION:

0025-xxRTD or -xxNTC

LEAD WIRE LENGTH OPTION:

0025-xxL6 FOR 6 FT (2m)