

PRODUCT DESCRIPTION

SPECTEC's high temperature magnetic pick-ups are offered in size from 5/8 to 3/4" Dia. and suited for harsh environments. The 0025 is available with an integral precision RTD100 or NTC10 temperature sensor positioned at the front.

SPECIFICATIONS

DC-Coil Resistance/Inductance:

Type 1: 120 Ω / 60 mH
 Type 2: 150 Ω / 100 mH

Magnetization: Standard: 1000 GAUSS, TYP.
 Low Mag: 300 GAUSS, TYP.

Temperature Range: 8HT: -450° to 850° F (-270° to 454° C)
 (RTD: -200° to 454° C)

For -450° to 450° F standard high temp service, please refer to 5HT models under 0015 • 0017 • 0019, 0026 • 0027, and 0029 • 0030 • 0035 • 0036

Pole Piece: Flush pole is standard.
 Extended pole version are available.
 See table below & notes on Page 2.

Gear Pitch	Pole Piece
≤36DP (Module 0.7)	EP62
≤26DP (Module 0.98)	EP93
≤24DP (Module 1.06)	EP106 EP125 FP

Construction: 303/304 Stainless Steel,
 Blindshell CF (closed face) design.
 Solid ceramic encapsulation.

Connector: MS 2 Pin (MS3102-10SL-4P)
 Glass sealed

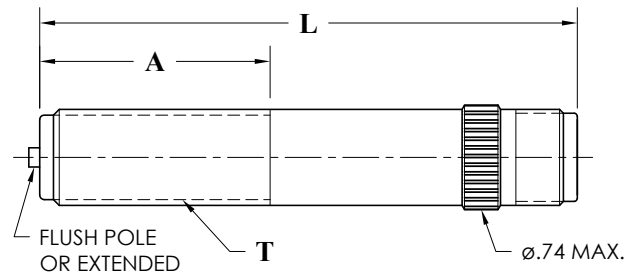
Lead Wire: Mica-glass insulated, 22AWG.

Application: For gear pitch of 24 DP or coarser.
 Versions are available for finer pitches up to 36 DP. (depending on pole piece selection).

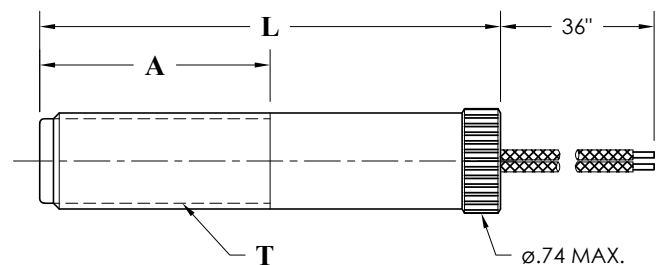
OPTIONS

For different length, material of construction, configuration, special pole type, thread size, high temperature MS connector version, precision custom magnetization, or other option please contact factory.

0024 5/8-18 UNF & 11/16-24 UNEF

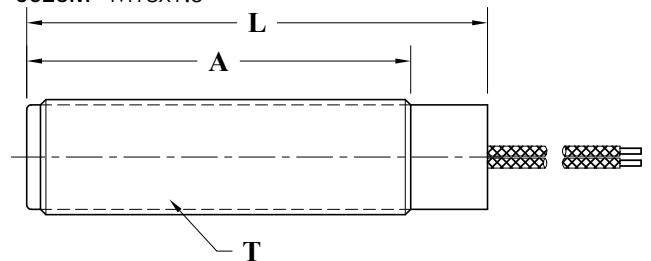


0025 5/8-18 UNF & 11/16-24 UNEF

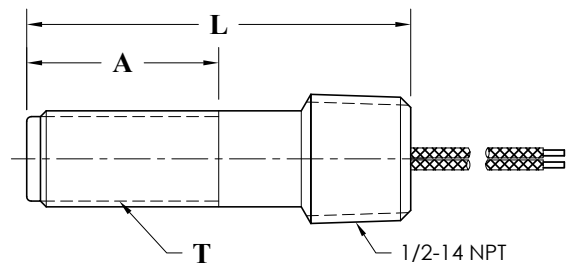


0025 3/4-20 UNEF

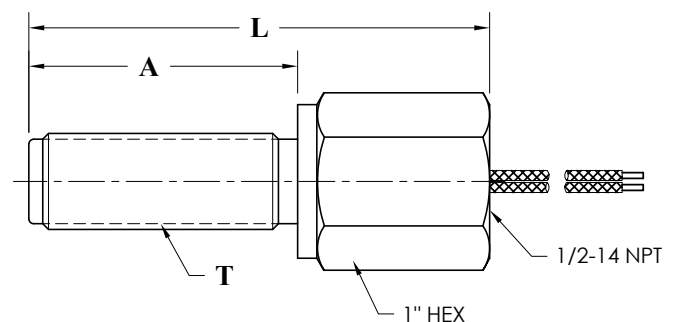
0025M M18x1.5



0025X 5/8-18 UNF & 11/16-24 UNEF



0025Y 5/8-18 UNF & 3/4-20 UNEF



ULTRA HIGH TEMPERATURE MAGNETIC VRS SPEED SENSOR

0024 CONNECTOR STYLE PRODUCT DETAILS:

P/N	T	A	L	POLE * [dia. & length]	RESISTANCE [ohms]	GAUSS [nominal]
0024-18	11/16-24 UNEF	1.1" (27mm)	2.8" (71mm)	.160" (4mm) FLUSH	150	400
0024-20					130	600
0024-21		1.3" (33mm)	3.5" (89mm)		800	

0025 LEAD-WIRE STYLE PRODUCT DETAILS:

P/N	T	A	L	POLE * [dia. & length]	RESISTANCE [ohms]	GAUSS [nominal]	
0025-00	1/2-20 UNF	1.0" (25mm)	2.8" (71mm)	.106" (2.7mm) FLUSH	80	400	
0025-01	5/8-18 UNF	1.0" (25mm)	3.0" (76mm)	.160" (4mm) FLUSH	120	1000	
0025-03					140		
0025-05		120					
0025-18	11/16-24 UNEF	1.1" (27mm)	2.3" (57mm)		150	600	
0025-19					130		
0025-20		1.3" (33mm)	3.0" (76mm)		130	1000	
0025-21					150		
0025-50	3/4-16 UNF	1.1" (28mm)	2.3" (57mm)		.160" (4mm) FLUSH	150	1000
0025-51		2.0" (51mm)	3.0" (76mm)				
0025-54	3/4-20 UNEF	1.1" (28mm)	2.3" (57mm)				
0025-55		2.0" (51mm)	3.0" (76mm)				
0025M-60		M18x1.5	1.1" (28mm)				
0025M-61	2.0" (51mm)		3.0" (76mm)				
0025X-10	5/8-18 UNF	2.0" (51mm)	3.5" (89mm)			120	
0025Y-10		2.8" (70mm)	4.0" (101mm)				
0025Y-50	3/4-20 UNEF	2.0" (51mm)	3.3" (83mm)	150			
0025Y-51		3.5" (89mm)	4.8" (121mm)				

* FOR EXTENDED POLE VERSIONS, SEE TABLE BELOW
(Ex. 0025-xxA for EP125)

P/N Modifier	Pole Piece	Dimensions
A	EP125	∅.125 x .070
B	EP106	∅.106 x .020
C	EP93	∅.093 x .032
D	EP62	∅.062 x .032

OTHER OPTIONS:

SPECIFIED MAGNETIZATION: 0025-xx-300G FOR 300 GAUSS
 INTEGRAL TEMP. SENSOR OPTION: 0025-xxRTD or -xxNTC
 LEAD WIRE LENGTH OPTION: 0025-xxL6 FOR 6 FT (2m)