

PRODUCT DESCRIPTION

SPECTEC's 1/4" size magnetic pickups are part of a family of modular, rugged, and high performance "passive" type speed sensors ranging in size from 3/16" to 3/4" Dia. They feature high output voltage and great configuration diversity to meet a wide range of applications.

SPECIFICATIONS

	Type 0	Type 1	Type 2
Coil Resistance:	40 Ω	100 Ω	160 Ω
Inductance:	4 mH	10 mH	14 mH
Output Voltage:	4 Vpp	6 Vpp	12 Vpp

(All Typical)
 (When tested at 1000 IPS against 20 pitch, 30 tooth gear at .005" gap, 100K Ohm load. Inductance and output voltage notations are max values.)

Magnetization: Standard: 500 GAUSS, TYP.
 Low Mag.: (See note on page 2)

Temperature Range: 3T: -150 to 330°F (-101 to 165°C)
 5HT: -450 to 450°F (-268 to 232°C)

Pole Piece: Flush Pole: .040" Ø
 Extended Pole: .040" Ø x .02 Height
 (0005 Shown with Extended Pole)

Lead Wire: TFE: 26 to 28 AWG

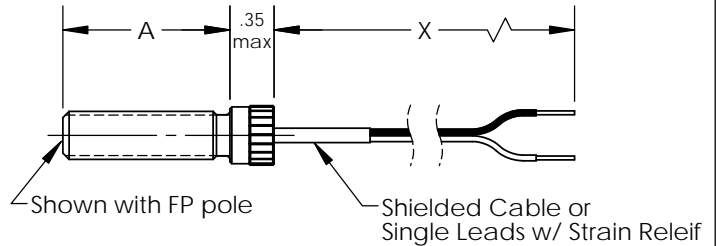
Construction: 300 Series Stainless Steel
 Solid Encapsulation

CE-Compliance: EN55011, EN50082-2

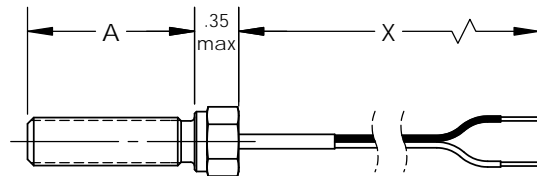
OPTIONS

For different length, material of construction, configuration, special pole-piece types, thread size, hermetically sealed, precision custom magnetization, custom connector and/or cable termination, please contact factory.

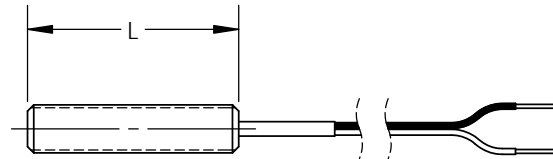
0004 1/4-40 UNS
 0004B 1/4-28 UNF
 0004M M6 x 0.75



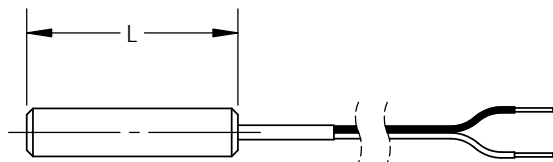
0004H 1/4-40 UNS
 0004HB 1/4-28 UNF
 0004HM M6 x 0.75



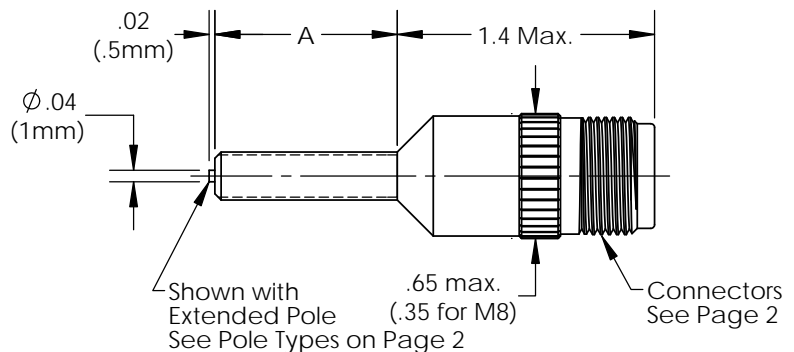
0004A 1/4-40 UNS
 0004AB 1/4-28 UNF
 0004AM M6 x 0.75
 0004AM8 M8 x 1.0



0004S Ø1/4 (6.4 mm) Smooth
 0004S8 Ø5/16 (8.0 mm) Smooth



0005 1/4-40 UNS
 0005B 1/4-28 UNF
 0005M M6 x 0.75



ORDER INFORMATION

Style: Options: Threads/Dia.:

0004 - 1/4-40 UNS
 0004B - 1/4-28 UNF
 0004M - M6x0.75

0004H - 1/4-40 UNS
 0004HB - 1/4-28 UNF
 0004HM - M6x0.75

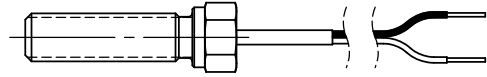
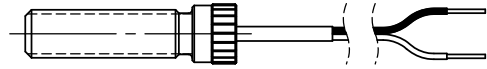
Thread Length(A): 1 - 0.75" (19mm)
 2 - 1.5" (38mm)
 3 - 2.0" (50mm)
 4 - 3.0" (75mm)

Pole: 1 - Flush Pole
 2 - Extended Pole (Ø.040 x .020 H)

Lead Wire(X): 2 - 2' (0.6m) Single Leads, 26 to 28 AWG
 7 - 3' (1.0m) Shielded Cable, 28 AWG*
 9 - 10' (3.0m) Shielded Cable, 28 AWG*
 A - 1' (0.3m) 26 AWG Leads w/ 10" Fiberglass & Silicone Protector

Temperature Range: 3 - -150° to +330°F (-101° to +165°C)
 5 - -450° to +450°F (-268° to +232°C)

Coil Resistance: 0 - 40 Ohm *Shield NOT connect to sensor shell; shield is intended to be connect to instrument
 1 - 100 Ohm
 2 - 160 Ohm

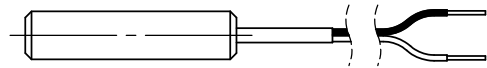
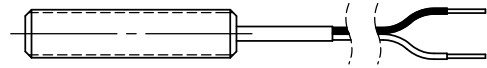


0004A - 1/4-40 UNS
 0004AB - 1/4-28 UNF
 0004AM - M6x0.75
 0004AM8 - M8x1.0

0004S - Ø 1/4" (6.4mm) Smooth
 0004S8 - Ø 5/16" (8.0mm) Smooth

Housing Length(A): 1 - 1.0" (25mm)
 2 - 1.5" (38mm)
 3 - 2.0" (50mm)
 4 - 3.0" (75mm)

SAME AS 0004



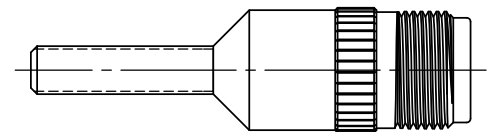
0005 - 1/4-40 UNS
 0005B - 1/4-28 UNF
 0005M - M6x0.75

Thread Length(A): 1 - 1.0" (25mm)
 2 - 1.5" (38mm)
 3 - 2" (50mm)
 4 - 3" (75mm)

SAME AS 0004

Connector: 1 - MS: 2 Pin MS3102-10SL-4P (see Bulletin 3000)
 2 - B: 2 Pin MS3113-H8C-2P (see Bulletin 3001)
 6 - MD4: 4 Pin MICRO DIN M12, 105°C MAX (see Bulletin 3005)
 7 - PD3: 3 Pin PICO DIN M8, 105°C MAX (See Bulletin 3006)

SAME AS 0004



CONNECTOR PINOUTS

