

# SPECTEC

THUNDERBIRD INTERNATIONAL CORPORATION  
 P.O. Box 360, Emigrant, MT 59027 USA  
 (406) 333-4967 FAX: (406) 333-4259  
 www.spectecensors.com



0004 • 0005  
 MAGNETIC VRS SPEED SENSOR  
 LEAD WIRE & CONNECTOR TYPE  
 1/4, 5/16, M6, M8

## PRODUCT DESCRIPTION

SPECTEC's 1/4" size magnetic pickups are part of a family of modular, rugged, and high performance "passive" type speed sensors ranging in size from 3/16" to 3/4" Dia. They feature high output voltage and great configuration diversity to meet a wide range of applications.

## SPECIFICATIONS

	Type 0	Type 1	Type 2
<b>Coil Resistance:</b>	40 Ω	100 Ω	160 Ω
<b>Inductance:</b>	4 mH	10 mH	14 mH
<b>Output Voltage:</b>	4 Vpp	6 Vpp	12 Vpp

(All Typical)  
 (When tested at 1000 IPS against 20 pitch, 30 tooth gear at .005" gap, 100K Ohm load. Inductance and output voltage notations are max values.)

**Magnetization:** Standard: 300 or 500 GAUSS, TYP.  
 Low Mag.: (See note on page 2)

**Temperature Range:** 3T: -150 to 330°F (-101 to 165°C)  
 5HT: -450 to 450°F (-268 to 232°C)

**Pole Piece:** Flush Pole: .040"Ø  
 Extended Pole: .040"Ø x .02 Height  
 (0005 Shown with Extended Pole)  
 All options have steel sensing end

**Lead Wire:** TFE: 26 to 28 AWG

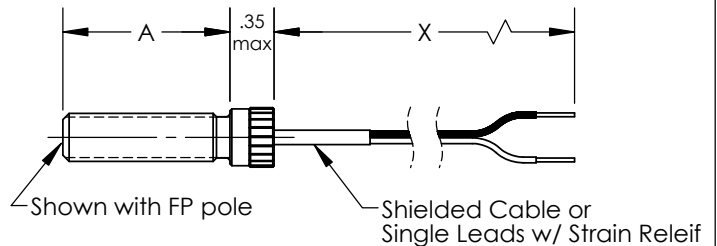
**Construction:** 300 Series Stainless Steel  
 Solid Encapsulation

**CE-Compliance:** EN55011, EN50082-2

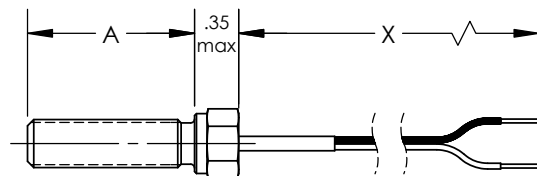
## OPTIONS

For different length, material of construction, configuration, special pole-piece types, thread size, hermetically sealed, precision custom magnetization, custom connector and/or cable termination, please contact factory.

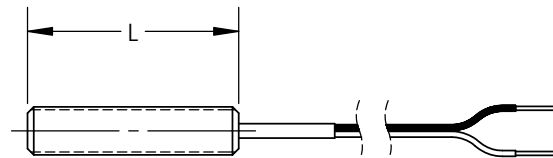
0004 1/4-40 UNS  
 0004B 1/4-28 UNF  
 0004M M6 x 0.75



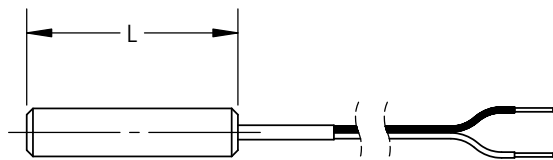
0004H 1/4-40 UNS  
 0004HB 1/4-28 UNF  
 0004HM M6 x 0.75



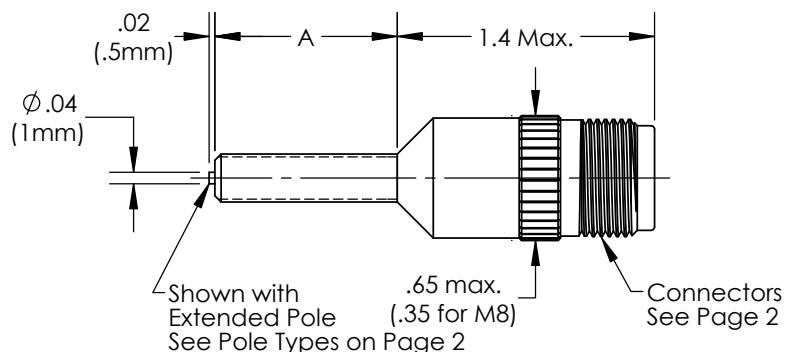
0004A 1/4-40 UNS  
 0004AB 1/4-28 UNF  
 0004AM M6 x 0.75  
 0004AM8 M8 x 1.0



0004S Ø1/4 (6.4 mm) Smooth  
 0004S8 Ø5/16 (8.0 mm) Smooth



0005 1/4-40 UNS  
 0005B 1/4-28 UNF  
 0005M M6 x 0.75



# ORDER INFORMATION

Style: Options: Threads/Dia.:

0004 -      1/4-40 UNS  
 0004B -      1/4-28 UNF  
 0004M -      M6x0.75

0004H -      1/4-40 UNS  
 0004HB -      1/4-28 UNF  
 0004HM -      M6x0.75

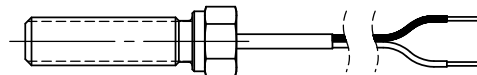
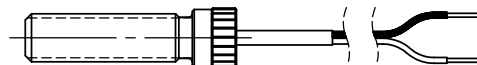
Thread Length(A):  
 1 - 0.75" (19mm)  
 2 - 1.5" (38mm)  
 3 - 2.0" (50mm)  
 4 - 3.0" (75mm)

Pole:  
 1 - Flush Pole (Steel Sensing end)  
 2 - Extended Pole (Ø.040 x .020 H) (Steel Sensing end)

Lead Wire(X):  
 2 - 2' (0.6m) Single Leads, 26 to 28 AWG  
 7 - 3' (1.0m) Shielded Cable, 28 AWG\*  
 9 - 10' (3.0m) Shielded Cable, 28 AWG\*  
 A - 1' (0.3m) 26 AWG Leads w/ 10" Fiberglass & Silicone Protector  
 \*Shield NOT connect to sensor shell; Shield is intended to be connected to instrumentation ground

Temperature Range:  
 3 - -150° to +330°F (-101° to +165°C)  
 5 - -450° to +450°F (-268° to +232°C)

Coil Resistance:  
 0 - 40 Ohm  
 1 - 100 Ohm  
 2 - 160 Ohm

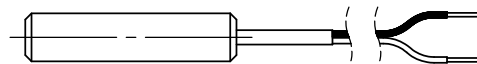
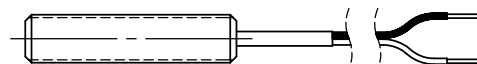


0004A -      1/4-40 UNS  
 0004AB -      1/4-28 UNF  
 0004AM -      M6x0.75  
 0004AM8 -      M8x1.0

0004S -      Ø 1/4" (6.4mm) Smooth  
 0004S8 -      Ø 5/16" (8.0mm) Smooth

Housing Length(A):  
 1 - 1.0" (25mm)  
 2 - 1.5" (38mm)  
 3 - 2.0" (50mm)  
 4 - 3.0" (75mm)

SAME AS 0004



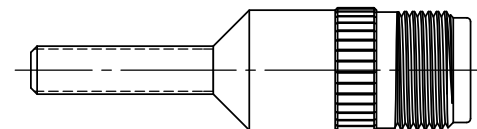
0005 -      1/4-40 UNS  
 0005B -      1/4-28 UNF  
 0005M -      M6x0.75

Thread Length(A):  
 1 - 1.0" (25mm)  
 2 - 1.5" (38mm)  
 3 - 2" (50mm)  
 4 - 3" (75mm)

SAME AS 0004

Connector:  
 1 - MS: 2 Pin MS3102-10SL-4P (see Bulletin 3000)  
 2 - B: 2 Pin MS3113-H8C-2P (see Bulletin 3001)  
 6 - MD4: 4 Pin MICRO DIN M12, 105°C MAX (see Bulletin 3005)  
 7 - PD3: 3 Pin PICO DIN M8, 105°C MAX (See Bulletin 3006)

SAME AS 0004



## CONNECTOR PINOUTS

