

PRODUCT DESCRIPTION

SPECTEC's DIGISPEC Magnetic pickups produce a digital frequency output proportional to speed. The internal amplifier provides for constant pulse shaping, signal amplitude, logic-level output, robust signal-to-noise ratio, usable at lower RPMs and greater air gap between the sensor and the actuator. All models are also available with an internal temperature probe.

For hazardous location Class 1 Division 1 please refer to IS90 & IS91, or for Class 1 Division 2 please refer to N90 & N91.

SPECIFICATIONS

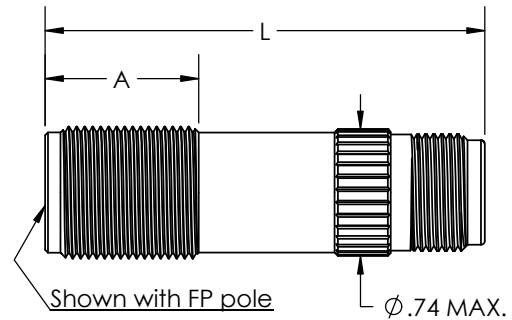
- Vs, Supply Voltage:** 7.5(12) to 30 VDC regulated
 4.5 to 7.5 VDC, unregulated
- Is, Supply Current:** ≤ 20 mA @ 30 VDC (Max.)
- Vo, Signal Out:** @ ≤ 20 mA sink, See page 2
- Input Sensitivity:** 30, 12, or 5 mVpp
- Operating Freq.:** ~ 3 to 10 kHz
 ~ 30 kHz at increased signal level, varies with target size, distance and pickup sensitivity. (Options: ≤ 100 kHz)
- Rise/Fall Time:** 0.04 μs / 0.16 μs
- Temperature Range:**
 2TE: -40° to 257°F (-40° to 125°C)
 3TE: -49° to 284°F (-45° to 140°C)
- Magnetization:** Standard: ≥ 900 Gauss, TYP.
 Low Mag: 250 Gauss, TYP. See Pg. 2 Note
- Pole Piece:** Flush (FP), Sealed Flush, (FPS), Extended (EP), Sealed Extended (EPS)
- | Gear Pitch | Pole Type |
|----------------------|---------------|
| ≤24 DP (MODULE 1.06) | FP130, FPS130 |
| | EP106, EP125, |
| | EPS130 |
- Connectors:** See Page 2 for Configurations
 All have Gold Plated Contacts
- Lead Wire & Assignments:** See Page 2 for Wire & Cable Options
 2TE: PVC, 20-24 AWG (105°C max)
 3TE: TFE, 20-24 AWG
 Red: Supply (+)
 Black: Common (-)
 White or Green: Signal Out
 Bare: Shield
- Construction:** 300 Series stainless steel housing
 Solid epoxy encapsulation

CE-Compliance: EN55011, EN50082-2

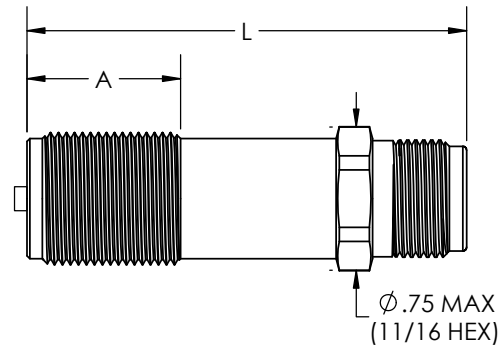
OPTIONS

Custom configurations, thread sizes, outputs, special materials of construction, temperature probes (NTC10, RTD100, or others) are available. Please contact sales for more information.

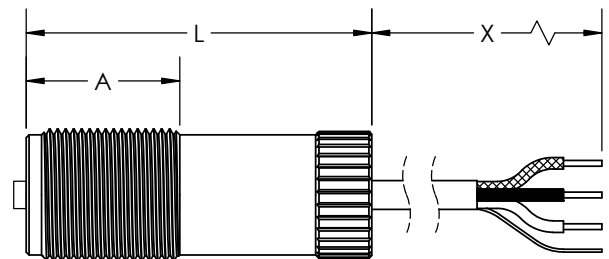
0092 11/16-24 UNEF



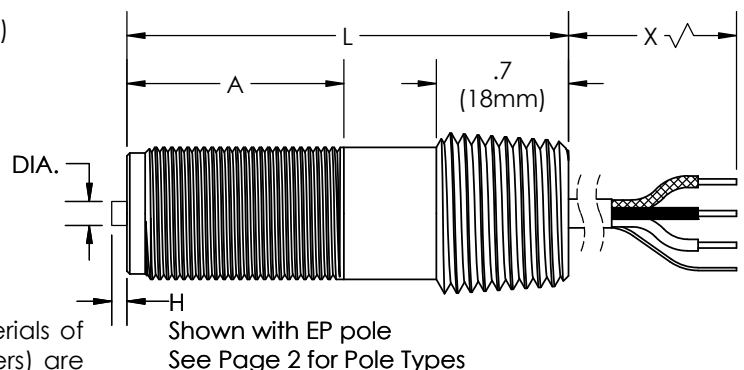
0092H 11/16-24 UNEF



0093 11/16-24 UNEF



0093X 11/16-24 UNEF with 1/2-14 NPT Male



ORDER INFORMATION

STYLE:

0092
0092H

OPTIONS:

-

THREADS/DIA.:

11/16-24 UNEF
11/16-24 UNEF

Thread (A) & Housing (L) Length:

	A	L
2	1.1" (28mm)	2.75" (70mm)
4	1.3" (33mm)	3.5" (89mm)

Pole Type (Ø, H):

- 1 - FP130 Flush Pole, Ø.130
- 2 - EP125 Extended Pole, Ø.125" x .065" H
- 3 - EP106 Extended Pole, Ø.106" x .020" H
- 5 - FPS130 Flush Pole, Ø.130 in Sealed S.S. Face
- 6 - EPS125 Extended Pole, Ø.125" x .065" H in Sealed S.S. Face

Vo, Pulse Out/ Output Logic:

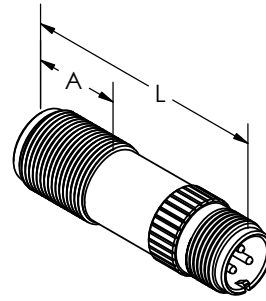
- 1 - 0-10V, NPN (Recommend Vs=12 VDC min)
- 2 - 0-5V, NPN [TTL]
- 3 - 0-Vs, NPN w/2.2k pull-up
- 4 - 0-Vs, NPN (OC), Open collector
- 5 - 0-Vs, Sink/Source (125°C max)
- 6 - 0-5V, Sink/Source (125°C max)
- 7 - 0-Vs, Sink/Source w/Short Circuit Protection (85°C max)
- 8 - 0-5V, Sink/Source w/Short Circuit Protection (85°C max)

Input Sensitivity and Temp.:

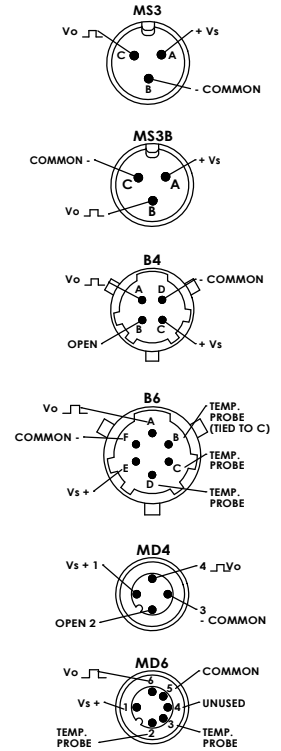
- 1 - 30 mV (2TE, 125°C)
- 2 - 12 mV (2TE, 125°C)
- 3 - 5 mV (2TE, 125°C)
- 5 - 30 mV (3TE, 140°C)
- 6 - 12 mV (3TE, 140°C)
- 7 - 5 mV (3TE, 140°C)

Connector:

- 1 - MS3: 3 Pin MS3106-10SL-3P (See Bulletin 3000)
- 3 - MS3B: 3 Pin MS3102-10SL-3P (See Bulletin 3000)
- 4 - B4: 4 Pin Bayonet, MS3113-H8A-4P (See Bulletin 3001)
- 5 - B6: 6 Pin Bayonet, MS3111-H10A-6P (See Bulletin 3001)
- 7 - MD4: 4 Pin Micro DIN (See Bulletin 3005)
- 8 - MD6: 6 Pin Micro DIN (See Bulletin 3005)



Connector Pinouts



Note: Not all combinations of options are possible.

0093

-

11/16-24 UNEF

Thread (A) & Housing (L) Length:

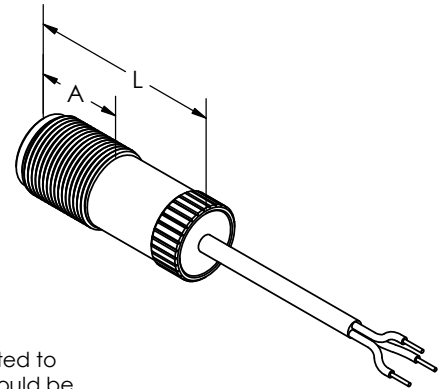
	A	L
1	1.10" (28mm)	2.25" (57mm)
2	1.30" (33mm)	3.0" (76mm)

SAME AS ABOVE

Lead Wire(X):

- 1 - 1' (.3m) Single Leads
- 2 - 2' (.6m) Single Leads
- 7 - 3' (1m) Shielded Cable
- 9 - 10' (3m) Shielded Cable
- A - 20' (6m) Shielded Cable

Note: Cable shielding is not connected to the sensor metal housing. It should be connected to instrument ground.



0093X

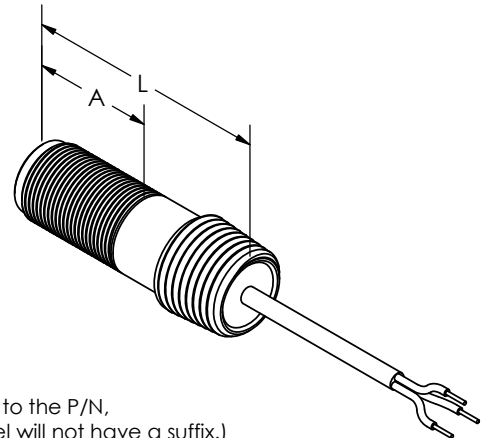
-

11/16-24 UNEF with 1/2-14 NPT Female

Thread (A) & Housing (L) Length:

	A	L
1	.70" (18mm)	1.9" (48mm)
2	1.3" (33mm)	2.6" (66mm)

SAME AS ABOVE



Notes: 1. The magnetization level for special or low mag. sensors, is designated as a suffix to the P/N, i.e.:0093 -xxxx-**300G**, designating a gauss level of 300(±50). (Standard mag. level will not have a suffix.)