

PRODUCT DESCRIPTION

SPECTEC's unique dual output magnetic pickups are part of a modular family of high performance, passive, variable reluctance sensors (VRS). The dual output is designed for pulse security applications where a redundant high reliability output is a must. It may be used in place of two separate sensors, providing component and installation savings. An integral temperature sensor is available as an option.

SPECIFICATIONS

DC-Coil Resistance/Inductance, Output Voltage:

Type 1: 150/ 210Ω 130 mH, 50 Vpp
 Type 2: 210/ 320Ω 150 mH, 60 Vpp
 Type 4: 600/ 900Ω 300 mH, 100 Vpp
 Type 5: 900/1350Ω 500 mH, 150 Vpp
 (When tested at 1000 IPS against 20 pitch, 30 tooth gear at .005" gap, 100k Ohm load. Inductance and output voltage notations are maximum values.)

Magnetization: Standard: 1100 GAUSS, TYP.
 Low Mag: 250 GAUSS, TYP.

Temperature Range: 2T: -100° to 260° F (-73° to 125° C)
 3T: -150° to 330° F (-101° to 165° C)
 5HT: -450° to 450° F (-268° to 232° C)

With temperature probe:
 RTD 100 Ohm platinum probe:
 -330° to 450° F (-201° to 232° C)
 NTC 10 kOhm thermistor:
 -40° to 260° F (-40° to 125° C)

Pole Piece: Flush(FP), Extended(EP) & Chisel Points (CP) are available. (Chisel must be oriented parallel with gear tooth.)

To optimize performance please note gear pitch/pole piece recommendations:

Gear Pitch	Pole Piece
≤ 36 DP (Module 0.7)	EP62, CP10
≤ 26 DP (Module 0.98)	EP93
≤ 24 DP (Module 1.06)	FP, EP106, EP125, CP45
≤ 12 DP (Module 2.11)	EP188
≤ 5 DP (Module 5.1)	EP250

Construction: 300 Series S.S., Solid Epoxy Encapsulation.

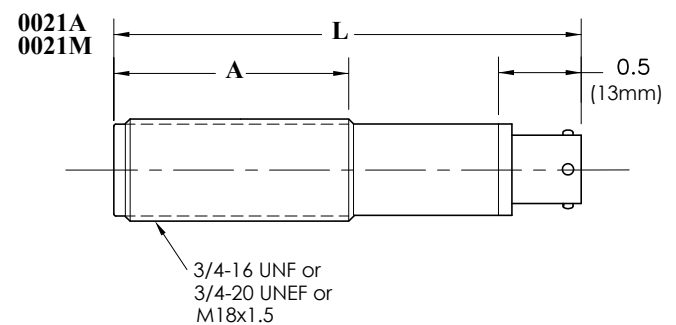
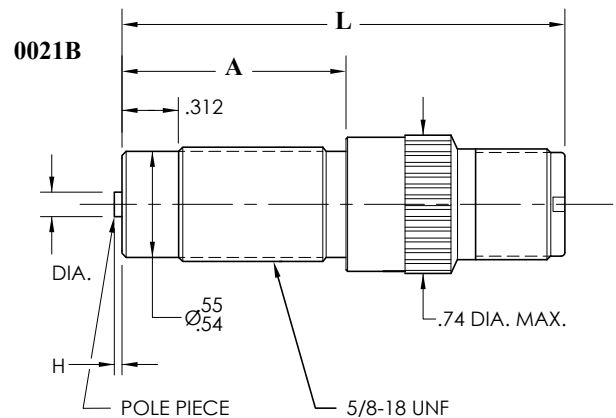
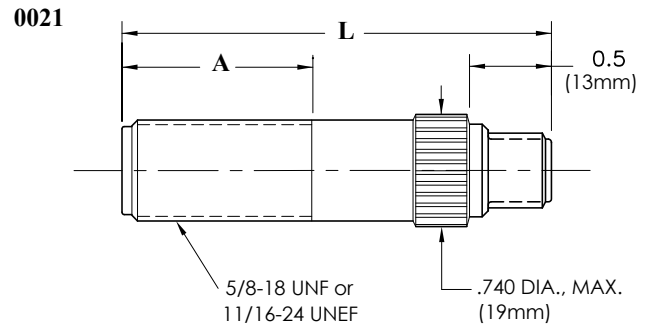
Connector: See Page 2 for options. All standard connectors have gold plated pins.

CE-Compliance: EN55011, EN50082-2

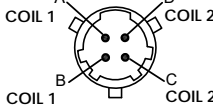
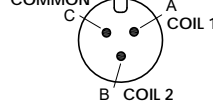
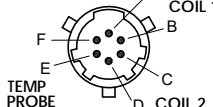
OPTIONS:

For different length, material of construction, configuration, special pole-piece types, thread size, hermetically sealed, precision custom magnetization, connector and/or cable termination, please contact factory.

For lead wire type, refer to: 0022.



Dual Coil Magnetic VRS Speed Sensor, P/N Selection Chart:

SPECTEC P/N	Thread	Thread Length	Overall Length with connector	Coil type	Pole Piece	Temp Rating	Connector
0021-xx	5/8-18	0.7-8.0 (18-200mm)	1.5-9.1 (38-230mm)	Type 1 150/220Ω Power Output	FP130 (Flush Ø.130) FP160 (Flush Ø.160) EP62 (Ø.062 x .03 H) EP93 (Ø.093 x .03 H) EP106 (Ø.106 x .02 H) EP125 (Ø.125 x .07 H) EP187 (Ø.187 x .02 H) EP250 (Ø.250 x .02 H) CP10 CHISEL (.010 W) CP45 CHISEL (.045 W)	2T 3T 5HT RTD 100 NTC 10	B4 MS3112E8-4P (PT02E8-4P) for mate see Bulletin 3001  MO3 / MS3 MS3102A10SL-3P for mate see Bulletin 3000  B6 MS3112E10-6P (PT02E10-6P) for mate see Bulletin 3001 
	11/16-24	0.7-1.5 (18-38mm)	1.5-3.0 (38-76mm)	Type 2 210/320Ω Power Output			
0021A-xx	3/4-16 3/4-20	0.7-4.0 (18-100mm)	1.5-5.0 (38-127mm)	Type 4 600/900Ω Std. Output	STAINLESS STEEL FACE VERSIONS FPS130 (Flush Ø.130) FPS160 (Flush Ø.160)		
	0021B-xx	5/8-18	1.1-2.5 (28-64mm)	1.7-3.1 (43-79mm)			
0021M-xx		M18x1.5	0.7-4.0 (18-100mm)	1.5-5.0 (38-127mm)			

When ordering, please specify features selected from the above table

Specific Models:

0021-01	5/8-18	1.2" (30mm)	2.5" (64mm)	4	FPS130	2T	MO3
0021-02	5/8-18	1.2" (30mm)	2.5" (64mm)	2	FPS160	3T	MS3
0021-03	5/8-18	2.5" (64mm)	3.7" (94mm)	2	FPS160	3T	MS3
0021-04	5/8-18	3.0" (76mm)	4.2" (107mm)	4	EP93	3T	B4
0021-05	5/8-18	4.0" (102mm)	5.2" (132mm)	4	EP93	3T	B4
0021-06	5/8-18	5.0" (127mm)	6.2" (157mm)	4	EP93	3T	B4
0021-07	5/8-18	4.0" (102mm)	5.2" (132mm)	5	EP106	3T	B4
0021-08	5/8-18	1.8" (46mm)	3.0" (76mm)	4	FPS	2T	MO3
0021-09	5/8-18	1.2" (30mm)	2.5" (64mm)	4	FPS130	3T	B4
0021B-01	5/8-18	1.4" (35mm)	2.5" (64mm)	2	EP93	3T	B4
0021B-02	5/8-18	1.4" (35mm)	2.5" (64mm)	1	FPS160	3T	B4
0021B-03	5/8-18	1.4" (35mm)	2.5" (64mm)	2	FPS160	2T	B6

NOTE: THE MAGNETIZATION LEVEL FOR SPECIAL OR LOW MAGNETIC DRAG SENSORS, IS CALLED OUT AS A SUFFIX TO THE PART NUMBER, ie: 0021-xx-300G DESIGNATING A GAUSS LEVEL OF 300 (STANDARD MAGNETIC LEVEL [UP TO 1200G] WILL NOT HAVE A SUFFIX).